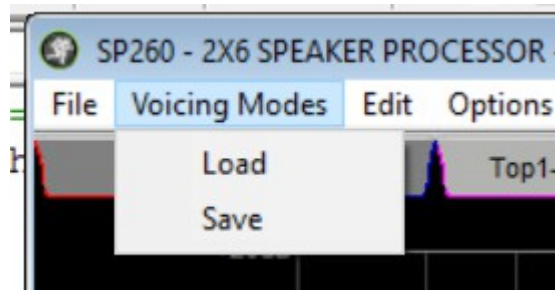


## SP260 v1.1

### Voicing Modes

On the new SP260 sw PC release we have implemented the following menu “Voicing Modes” (Preset-Channel),



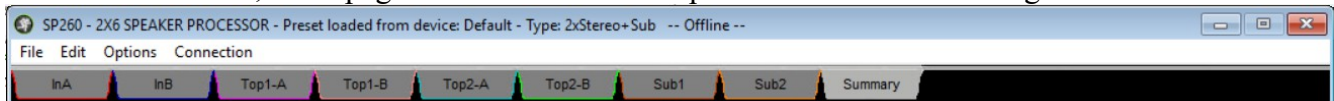
after click on the item “Load”, a window will be show (open File) in order to select the folder and the file that the User have downloaded from website or saved with the sw PC.

After loaded the file, the system load the parameters on the output selected.

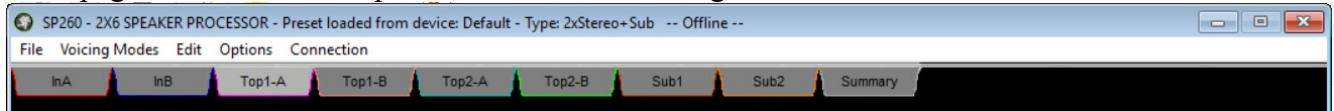
After click on the item “Save”, a window will be show (save File) where is possible input the file name and save the parameters of the output selected to PC. This preset-channel can be recalled with the function “Load” of the menu “Voicing Modes”.

The preset-channel loaded will be not stored on the memory preset, but they are inside at the current preset, so if the User don't want lost the current configuration (i.e recall a new preset), the User must save the current preset to PC using the function “Save preset to PC...” of the menu “File” or store it using the function “Store preset to device...” of the menu “File”.

On the sw interface, if the page selected is not an Output then the menu “Voicing Modes” will be hide.



if the page selected is an Output then the menu “Voicing Modes” will be show.



Following the 5 preset-channel created with the information sent by e-mail:

Voicing Modes = DRM 212

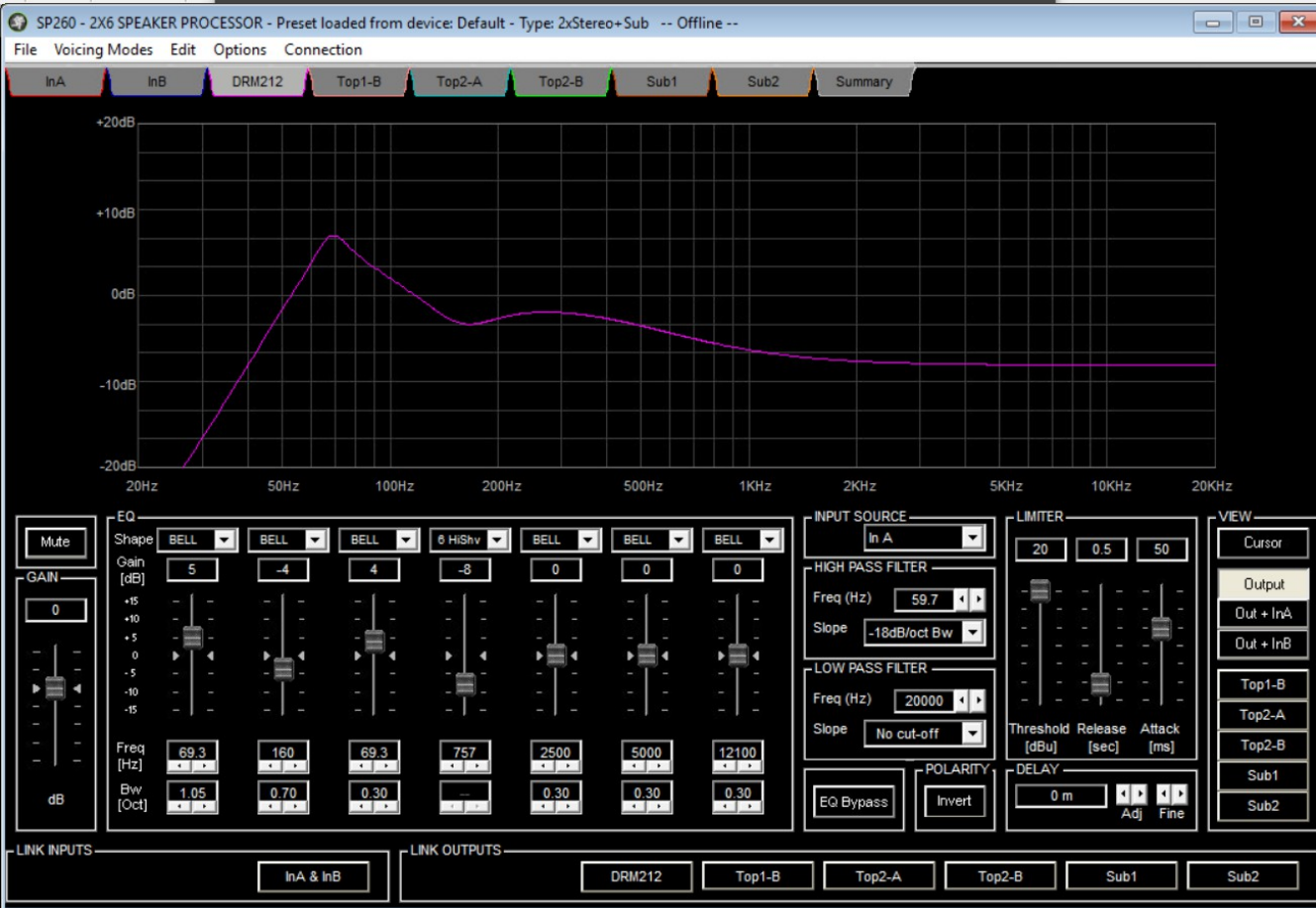


fig.1

## Voicing Modes = DRM 215

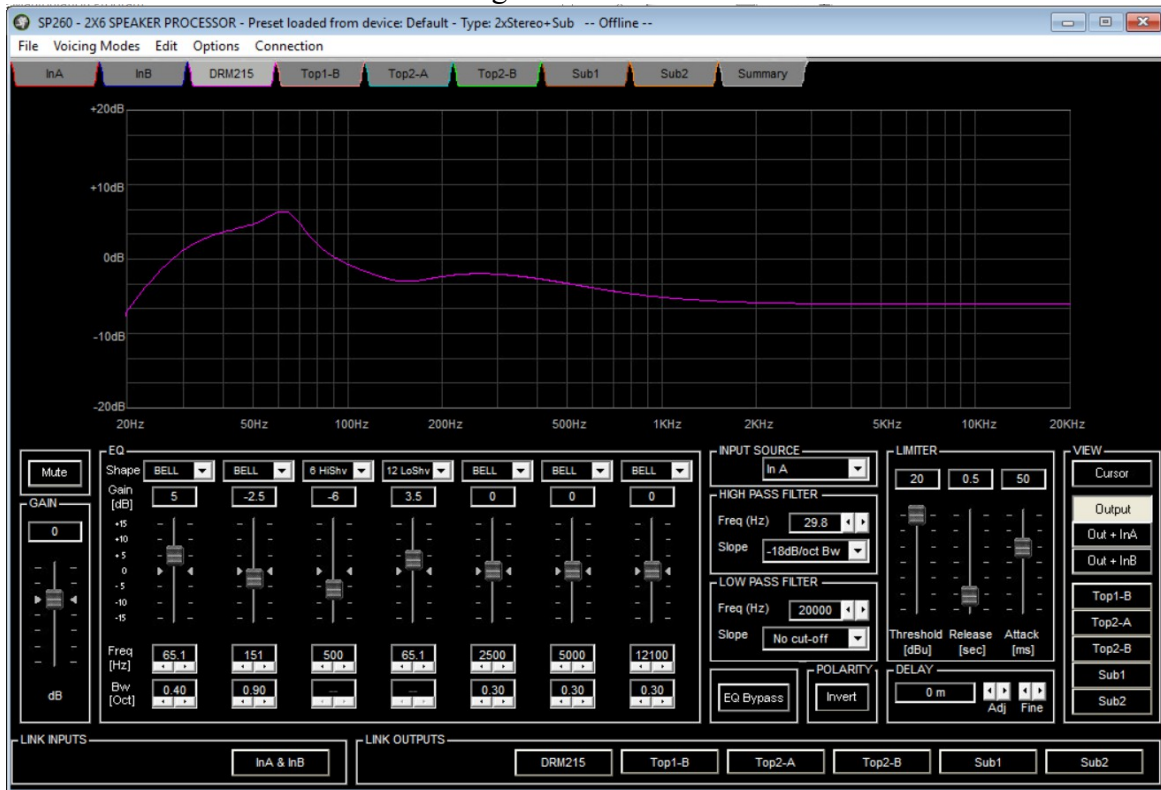


fig.2

## Voicing Modes = DRM 315

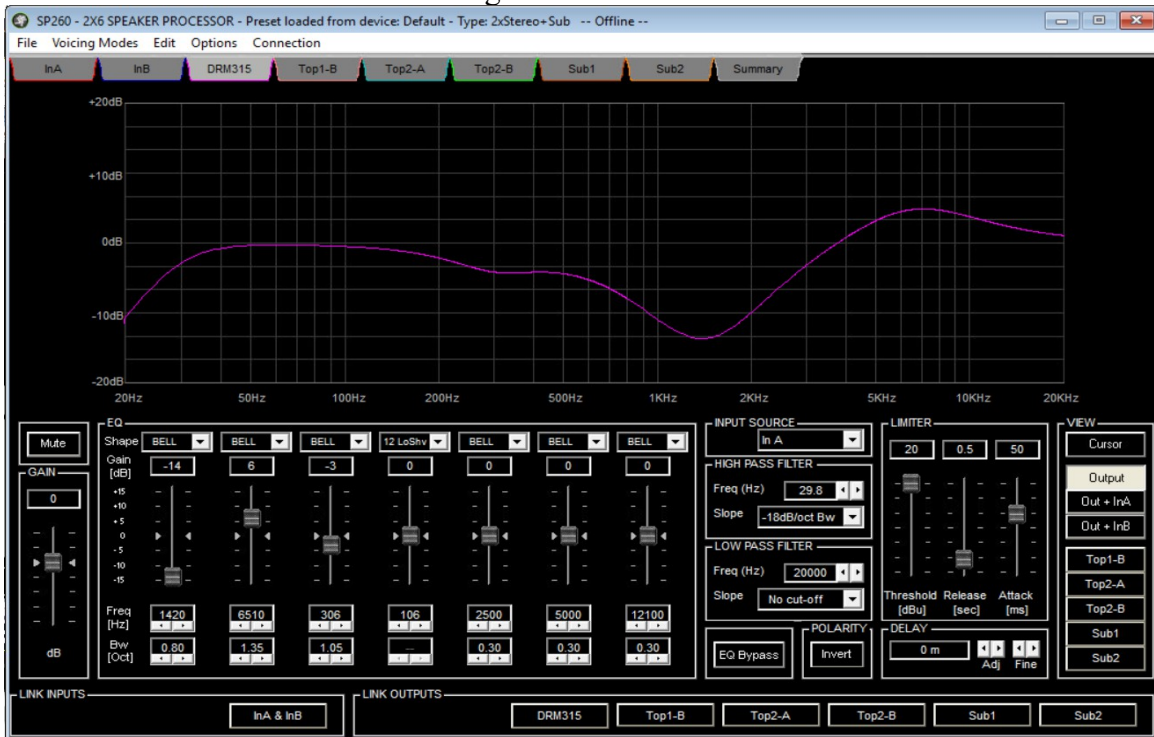


fig.3

## Voicing Modes = DRM 21A

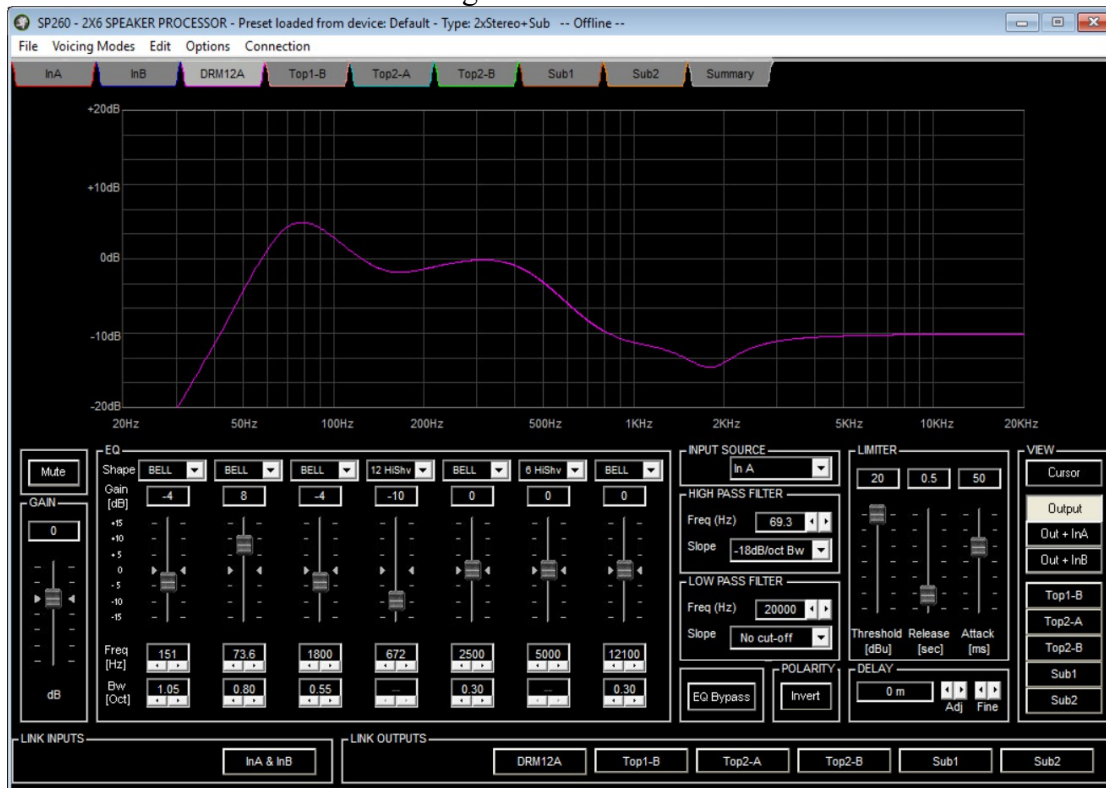


fig.4

## Voicing Modes = DRM 18S

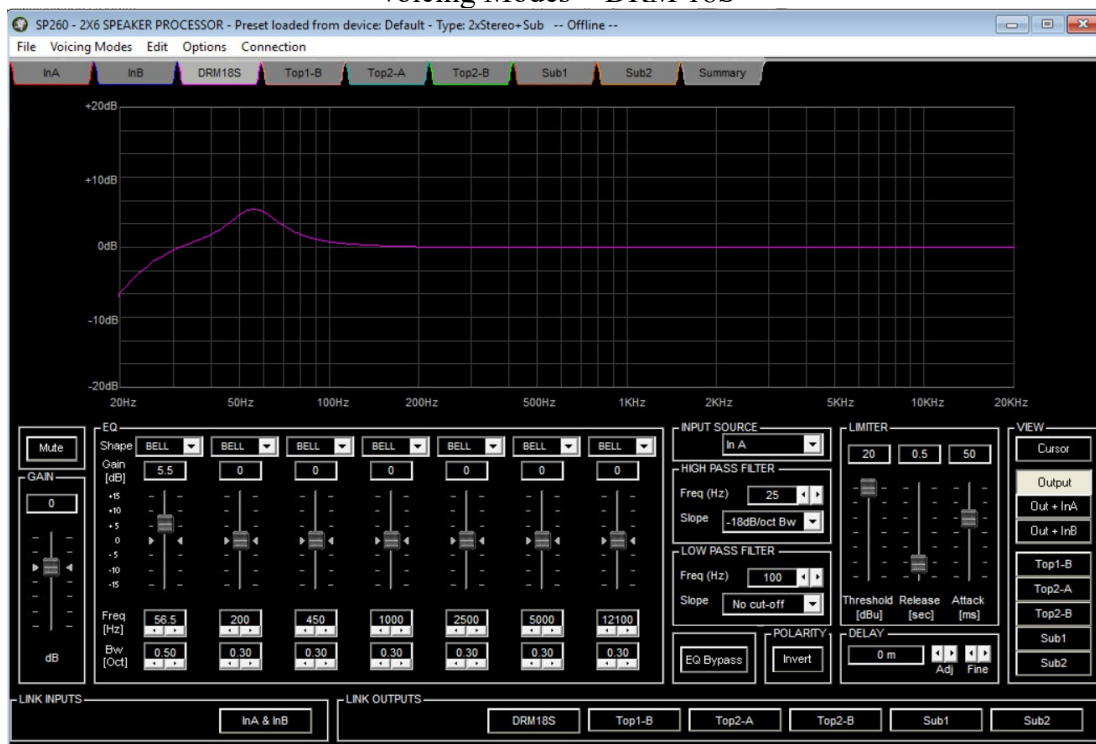


fig.5

the parameters included in the voicing modes (preset-channel)

- Output\_x Gain
- Output\_x Mute
- Output\_x Polarity
- Output\_x Delay
- Output\_x Limiter
- Output\_x High Pass Filter
- Output\_x Low Pass Filter
- Output\_x EQ Bypass
- Output\_x PEQ Filter (7)
- Output\_x Channel Label

Output\_x is the selected output

the 5 voicing modes created on the base of the mail sent, will be:

[illegible]